

Friends, Food, & Fun



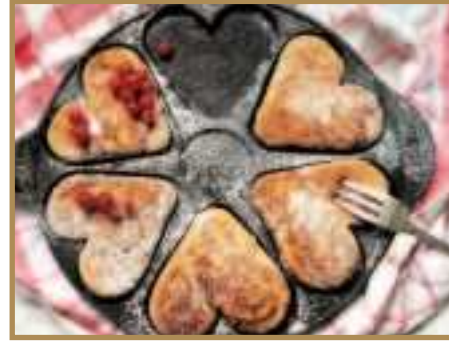
May reminds me of picnics and potlucks, and good food shared with friends and family! In May, we have several opportunities to grab a bite with friends.

On Tuesday, May 7th, head to the Harvey Bakery. There were so many people signed up in April, I decided to offer



a second trip. Come along and grab a pastry & coffee. The Harvey Bakery is where the old Plymouth-Chrysler showroom used to be.

On Friday, May 10th, we'll celebrate moms with a Mother's Day lunch.



There are also two brunches being offered in May. The regular Saturday brunch is on Saturday, May 4th. Then, the dining room will offer a holiday brunch on Memorial Day on Monday, May 27th.

Happy Birthday

1 - Mary Quisenberry
7 - Lora Stewart
8 - Donna Suenram
11- Frank Andrews
18 - Crystal McGee DePue
23 - Nina Latimer

Staff Birthday
11 - Eric Legleiter

Enjoy your special day!

Memorial Kick-Off Potluck



Kick off Memorial Weekend with our annual potluck, 5-24 at 12pm. The community will provide hot dogs & burgers. Residents are invited to bring their favorite salad, side, or dessert. This will be in place of the regular lunch. There is no charge for the meal. If you can't bring a dish but would like to contribute, ask Caitlin about helping set up. Or, just show up! Everyone is welcome.

Kick off Memorial Weekend with our annual potluck, 5-24 at 12pm. The community will provide hot dogs & burgers. Residents are invited to bring their favorite salad,



THE COTTAGES AT BRADFORD VILLAGE
300 Enz Drive • Edmond, OK 73034

National Photography Month



Say cheese!

May is National Photography Month - the weather is great, the days are longer, and everything is in bloom so bright colors are everywhere. It's a great time to capture the world around you. On Thursday, May 2 at 9:30 am, gather for a brief "basics of

photography class." Then, check out a disposable camera! Keep it for a few days, and turn it in to be passed to the next person. I thought it would be so fun to see Bradford through other people's eyes. At the end of the month we'll develop the film, display the photos, and take a look at what we each "see" around the community!

Celebrate "Spring Fling"

Spring is in the air. Celebrate the season with Spring Fling! The event will feature fresh & light fare plus flowers everywhere! Our guest entertainer for the evening will be Kelly Almond, an experienced pianist who will offer everything from 20's ballads to 60s rock!



Spring is in bloom!

Thursday, May 23

4:30 - Cocktails

5:00 - Dinner

Villagio Team

Eric Legleiter
Executive Director

Kammi Henry
Dir. Financial Services

Paula Brooks
Dir. Sales

Caitlin Cairns
Dir. Community Life

Donna Syth
Concierge

Mike Parikh
Dir. Dining Services

Rashid Birdsong
Dining Services

Rhonda Durant
Dining Services

Shafaly Mondal
Dining Services

Tamam Al-Ali
Dining Services

Shane Humphrey
Dir. Maintenance

Larry French
Maint. Services

Eric "E" Forcha
Security/ Maint.

Dee Bailey
Dir. Housekeeping

Skye Wapskineh
Housekeeping






The Cottages at Bradford Village

300 Enz Drive • Edmond, OK 73034
(405) 531-3444 • www.villagioliving.com

May 2024

SUNDAY	MONDAY	TUESDAY	WEDNESDAY	THURSDAY	FRIDAY	SATURDAY
	Everyday <i>Experiences</i>		9:45 OKC Baseball Game O <i>Depart approx 9:45</i> <i>Game at 11am</i> 12:00 Dominoes L	8:30 Exercise w/ UCO CW 9:30 Nt'l Photo. Month CW <i>Community Photo Project</i> 2:00 Walmart O	8:30 Exercise w/ UCO CW 12:30 Pegs & Jokers CC 2:00 May Day Tea CW	10-11 Brunch CC
	7:30 - 8:30 Breakfast	Reserve Commons West				
	11:30 - 12:30 Lunch	Call Donna, Concierge				
	Gym Available 24/7	405.531.3444				
	Exercise M,T,Th,F					
3:30 Church Service AL 5	NT'L NURSES WEEK 6 8:30 Weekly Brain Busters CC Exercise w/ UCO CW 10:00 Executive Committee CW 12:30 Bingo CW 1:30 Explorations: CW <i>British Castles</i>	8:30 Exercise w/ UCO CW 10:15 Men's Coffee CW 10:15 Women's Coffee CC 12:30 The Bible CW for Grown-Ups 1:30 Harvey Bakery O <i>round 2</i>	9:30 The Great Courses CW 10:45 Walk About Wed. CC 12:00 Dominoes L 2:00 Crafter's Corner CW <i>Garden Tiles</i>	8:30 Exercise w/ UCO CW 10:30 Europe Day L <i>Travel Trivia</i> 4:00 Men's Poker CW	8:30 Exercise w/ UCO CW <i>UCO Last Day</i> 11:30 Mother's Day Lunch CC 12:30 Pegs & Jokers CC	11
3:30 MOTHER'S DAY Church Service AL 12 Happy Mother's Day!	13 8:30 Weekly Brain Busters CC Exercise (no UCO) CW 12:00 Quarterly Cottagers' CC Business Mtg 12:30 Bingo CW 1:30 Explorations: CW <i>British Castles</i>	14 8:30 Exercise (no UCO) CW 10:00 Bradford Book Club L 10:15 Men's Coffee CW 10:15 Women's Coffee CC 12:30 The Bible CW for Grown-Ups	15 8:00 Eric's Coffee Chat CC 9:30 The Great Courses CW 10:45 Walk About Wed. CC 11:45 Birthday Celebration CC 12:00 Dominoes L	16 8:30 Exercise (no UCO) CW 9:30 Cheer Club CW 2:00 Walmart O	17 8:30 Exercise (no UCO) CW 12:30 Pegs & Jokers CC 3:00 Language of Flowers CW <i>Message Decoding</i>	18
3:30 Church Service AL 19	20 8:30 Weekly Brain Busters CC Exercise (no UCO) CW 12:30 Bingo CW 1:30 Explorations: CW <i>British Castles</i>	21 8:30 Exercise (no UCO) CW 10:15 Men's Coffee CW 10:15 Women's Coffee CC 12:30 Menu Chat CC 12:30 The Bible CW for Grown-Ups	22 9:30 The Great Courses CW 10:45 Walk About Wed. CC 12:00 Dominoes L 2:00 Celebrate Create: CC <i>Décor Help</i>	23 8:30 Exercise (no UCO) CW 9-10 Late Breakfast CC 4:30 Celebrate: CC Spring Fling w/ pianist Kelly Almond 4:30 p - Cocktails 5:00 p - Dinner	24 8:30 Exercise (no UCO) CW 12:00 Memorial Weekend CC Kickoff Potluck 1:00 Pegs & Jokers CC	25
3:30 Church Service AL 26	MEMORIAL DAY 27 Weekly Brain Busters CC 10-11 Brunch CC <i>Staff Offices Closed</i> <i>Happy Memorial Day!</i>	28 8:30 Exercise w/ UCO CW 10:15 Men's Coffee CW 10:15 Women's Coffee CC 12:30 The Bible CW for Grown-Ups 2:00 New: Classic Movies CW <i>AFI Top 100 Funniest...</i> <i>Tootsie (1982)</i>	29 9:30 The Great Courses CW 10:45 Walk About Wed. CC 12:00 Dominoes L 2:00 Walmart O	30 8:30 Exercise w/ UCO CW 9:30 Cheer Club CW 2:00 Patio Party CW <i>Ice Cream Sundaes</i>	31 8:30 Exercise w/ UCO CW 12:30 Pegs & Jokers CC 3:30 Movie & Pizza CW <i>Death on the Nile (2022)</i>	LOCATION KEY CC - Community Center AL - Assisted Living L - Library O - Off Campus CW - Commons West TBA - To Be Announced -

All activities are subject to change.